

SNIA  | SFF

Update Project Proposal: SFF-TA-1032 Multi-Lane External High Speed Cable Connector System

Presented: 12/05/2025

Presenter: Egide Murisa [Molex], Dan Gorenc [TE]

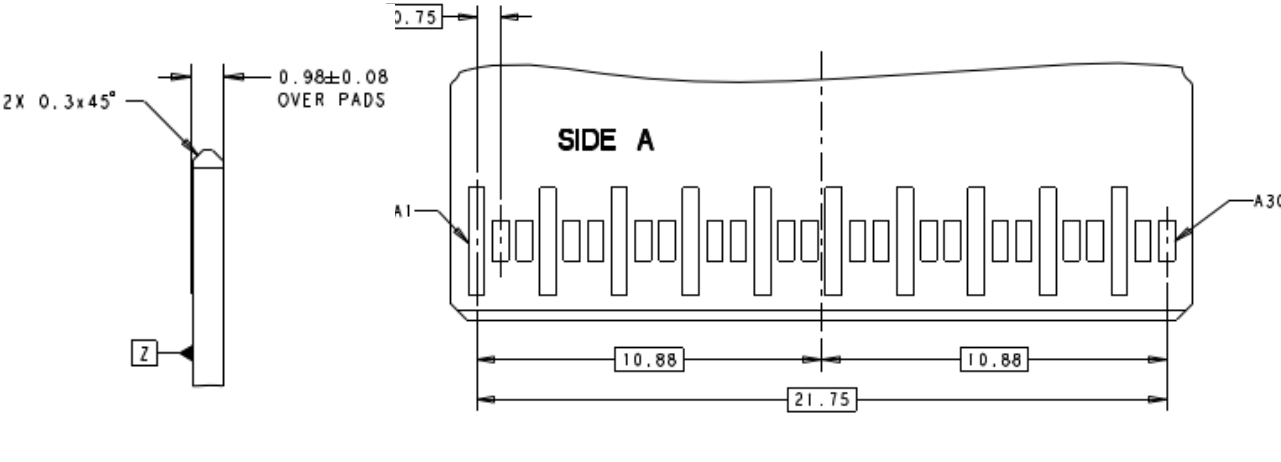
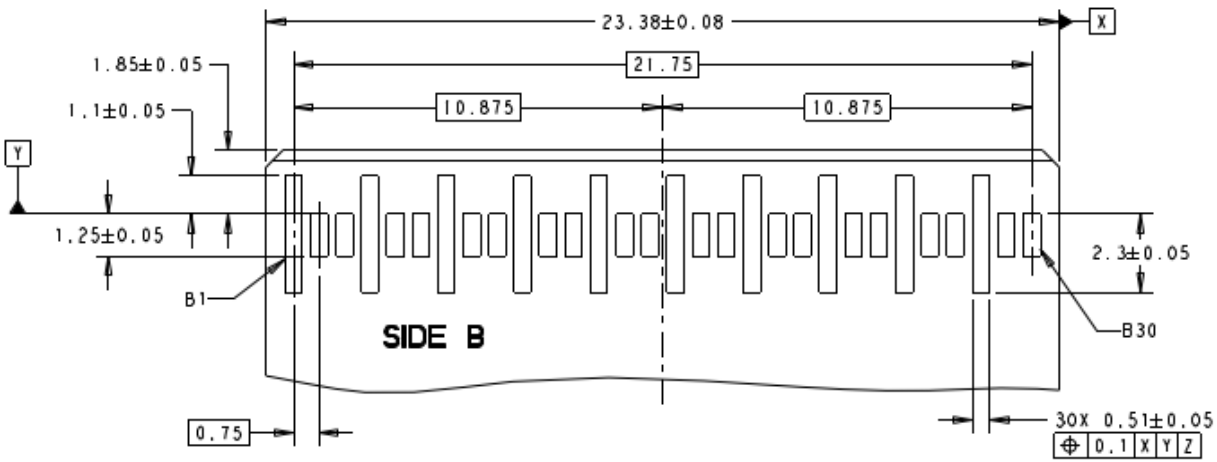
Supporters: Dan Gorenc [TE], Egide Murisa [Molex],
Mohiuddin Mazumder [Intel]

Update Project Proposal: SFF-TA-1032 Multi-Lane External High Speed Cable Connector System

- The scope of the proposed changes:
 - Update mating interface to support PCIe 7.0 while maintaining backward compatibility
 - Update connector footprint to improve SI, maintains backward compatibility
 - Make other fixes and editorial changes to the current revision 1.0
- Editor(s): Egide Murisa [Molex], Dan Gorenc [TE]
- Supporters:
 1. Molex
 2. TE
 3. Intel

Update Project Proposal: SFF-TA-1032 Multi-Lane External High Speed Cable Connector System

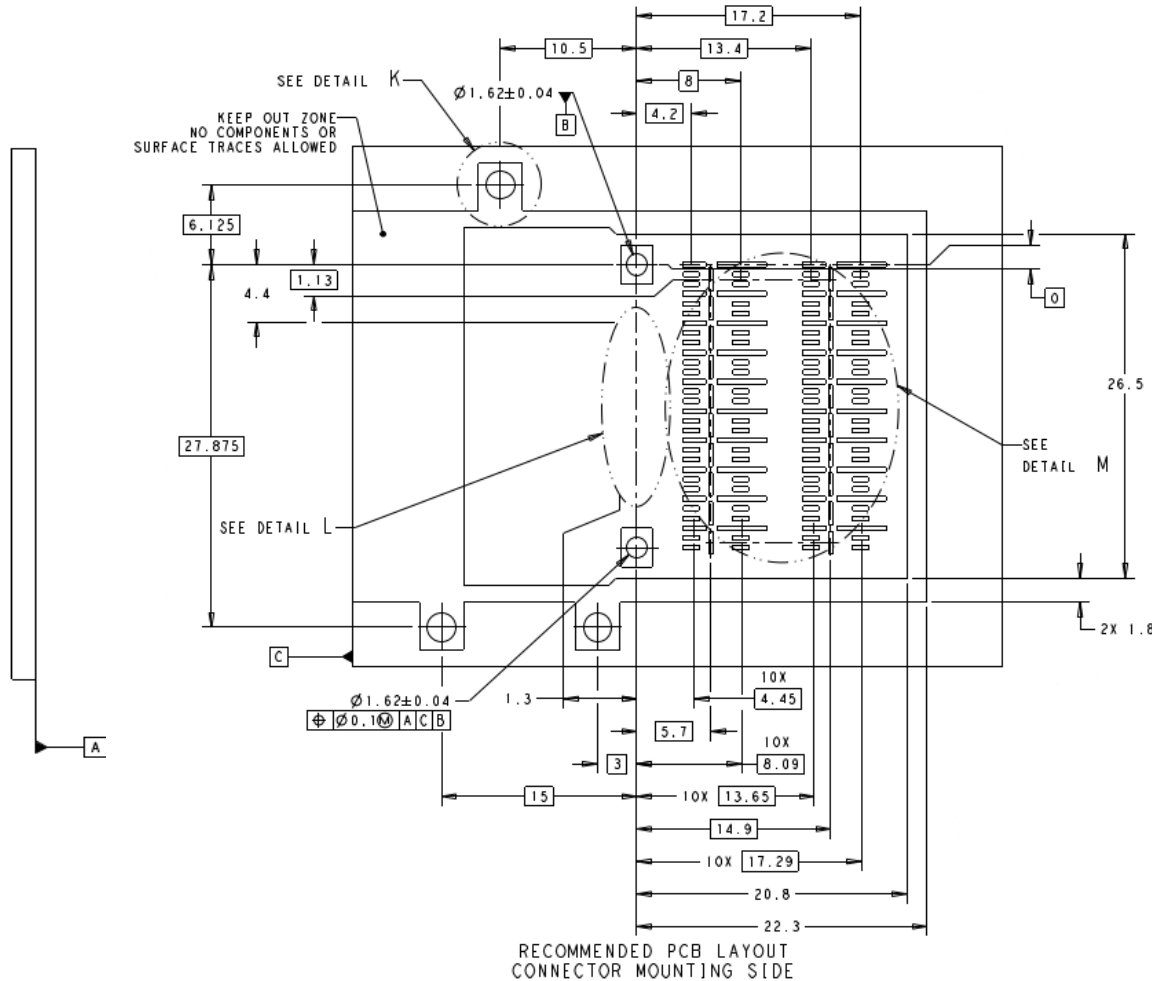
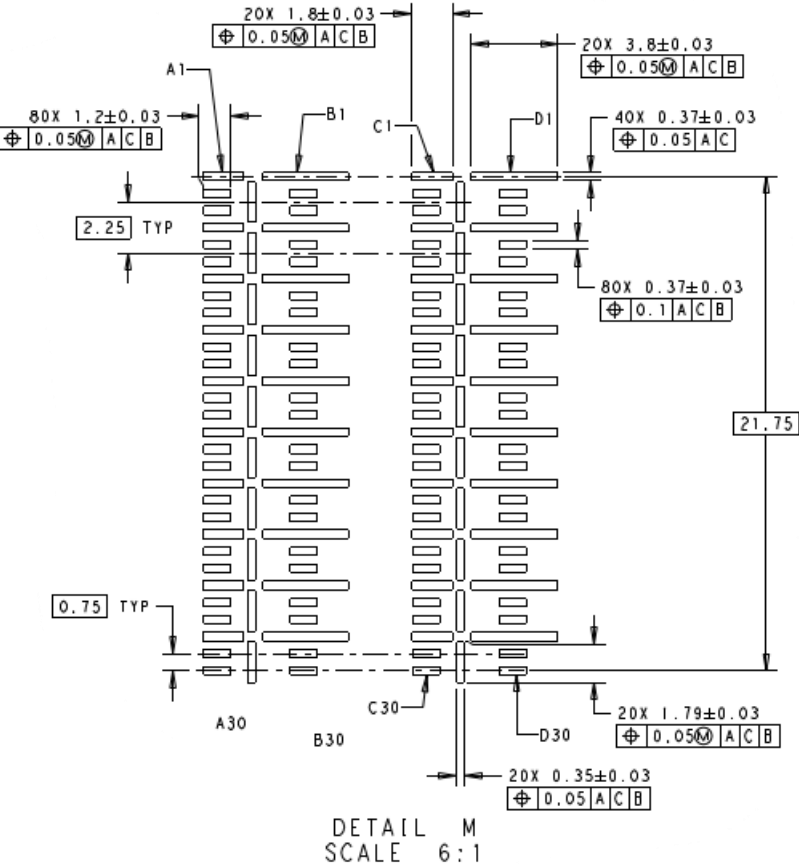
- Proposed module footprint



RECOMMENDED PADDLE CARD LAYOUT

Update Project Proposal: SFF-TA-1032 Multi-Lane External High Speed Cable Connector System

- Proposed connector footprint





Thank You

SNIA SFF Chair Contact: sff-chair@snia.org

SNIA SFF URL: <https://www.snia.org/sff>