

SNIA  | SFF

Update Project Proposal: SFF-TA-1016 Internal Unshielded High Speed Connector System

Presented: 2026-04-24

Presenter: Zhineng Fan [Amphenol]

Supporters: Feng Pan [FIT] Mohiuddin Mazumder [Intel],
Raymond Law [Lotes], Egide Murisa [Molex] Ashika
Pandankeril Shaji [TE]

Update Project Proposal: SFF-TA-1016 Internal Unshielded High Speed Connector System

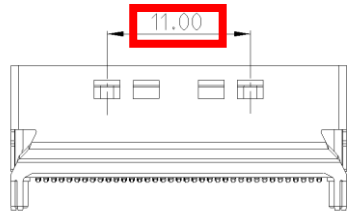
- **Modification proposals**
 - Add wording to clarify the plug card type
 - Add enhanced version to address higher wrenching force requirement
 - Update voltage requirement
- **Editor(s): Zhineng Fan**
- **Supporters: Minimum 3 member companies required (can include editor's company)**
 1. Amphenol
 2. FIT
 3. Intel
 4. Lotes
 5. Molex
 6. TE

Clarify Plug Type

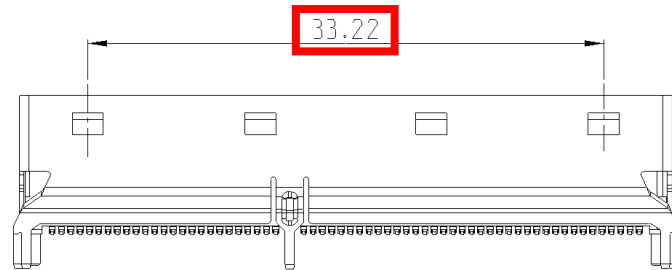
- Add the following words in section 4.1 Configuration Overview/Descriptions

“...The plug (commonly refer as card, paddle card, or edge card) can be made of either PCB or lead frame.”

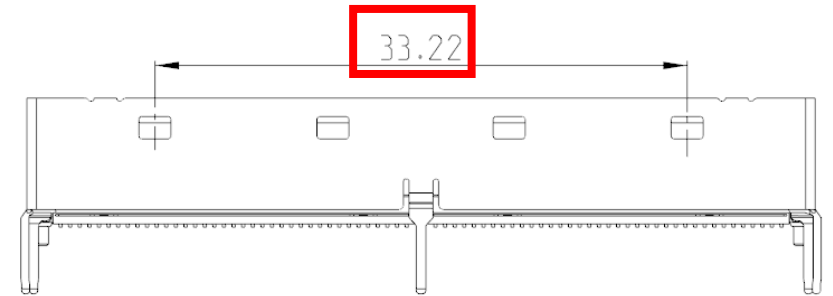
Add Enhanced Receptacle Connector



- Add 11mm wide latch holes to enhanced 74P receptacle

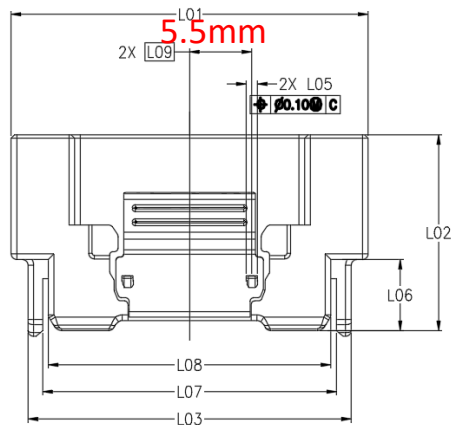


- Add 33.22mm wide latch holes to enhanced 124P receptacle connector

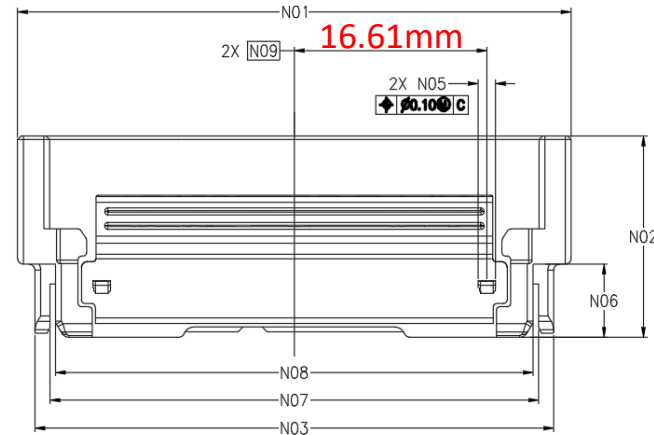


- Add 33.22mm wide latch holes to enhanced 148P receptacle connector

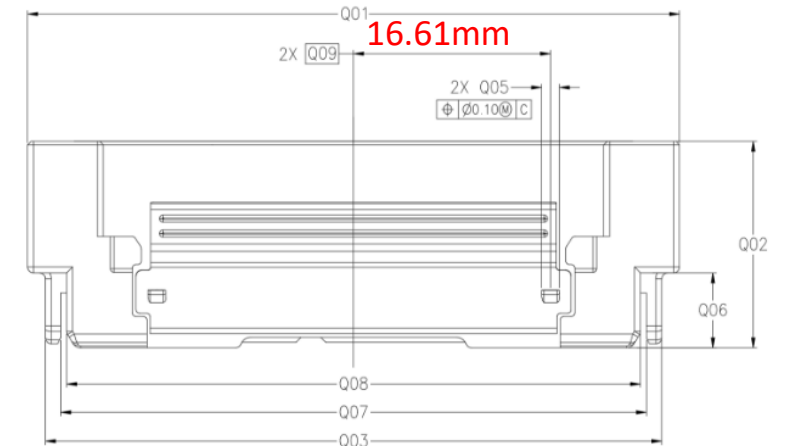
Add Enhanced Plug



- Enhanced 74P plug with 11mm wide latch



- Enhanced 128P plug with 16.61mm wide latch



- Enhanced 148P plug with 16.61mm wide latch

Modify Requirements

- Add wrenching strength requirement for enhanced version

Wrenching Strength (Enhanced)	Bend cable 90° at minimum bend radius. Pull 40 N Min in each of 4 axis directions for round cable. Pull 40 N Min in each of 2 axis directions for flat cable.	No damage to plug / cable assembly.
-------------------------------	-----------------------------------------------------------------------------------------------------------------------------------------------------------------------------------	-------------------------------------

- Modify voltage requirement

Operating Rating Voltage	Maximum voltage to which a contact is exposed in use	30 29 V DC per contact MAX
--------------------------	------------------------------------------------------	----------------------------------------------



Thank You

SNIA SFF Chair Contact: sff-chair@snia.org

SNIA SFF URL: <https://www.snia.org/sff>